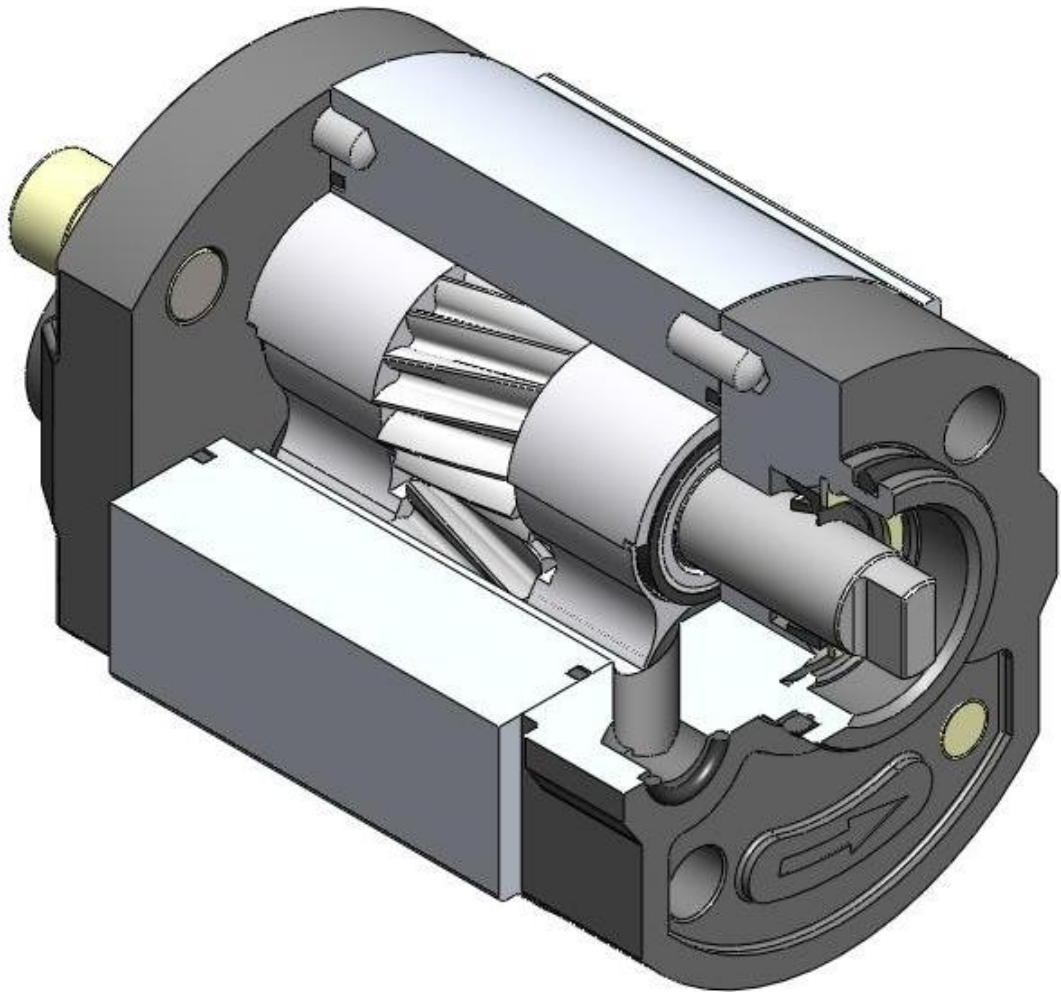




Hydraulic helical gear pump

H 10A(C)...X302...



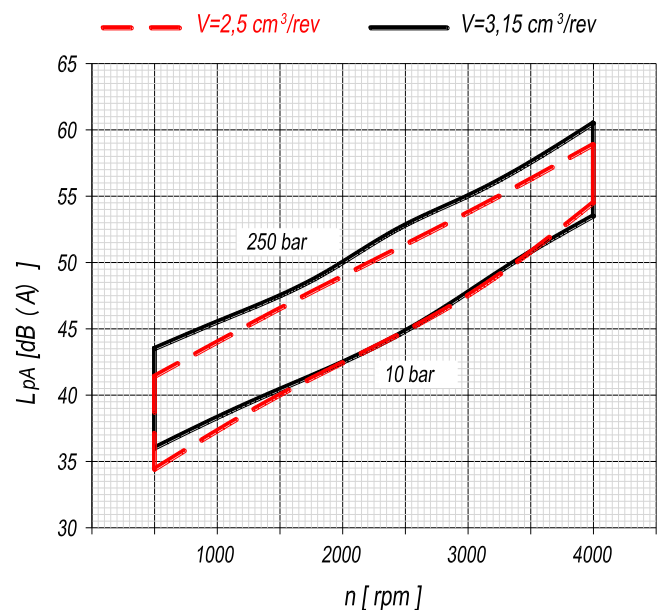
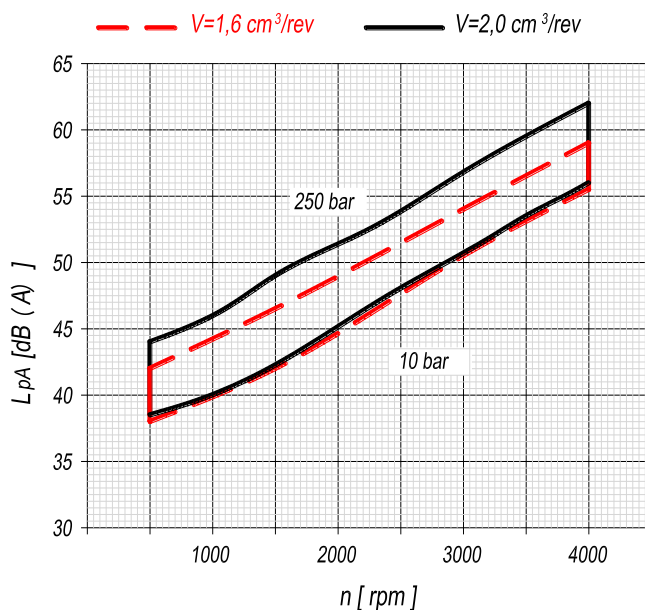
e-mail: caproni@caproni.bg
WEB: www.caproni.bg

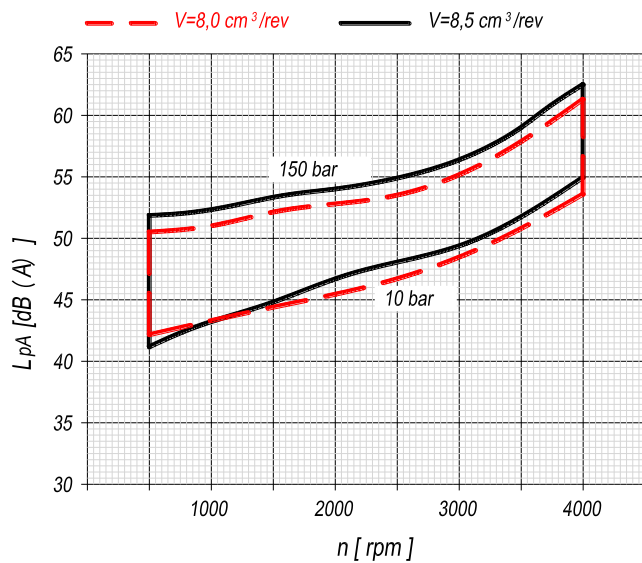
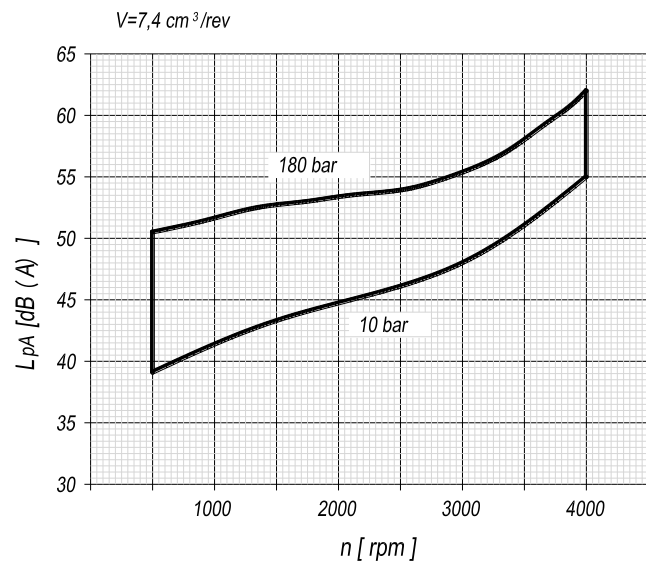
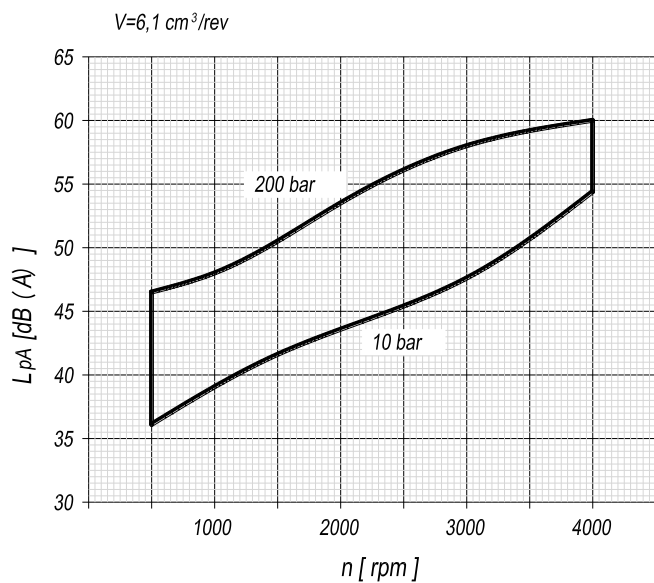
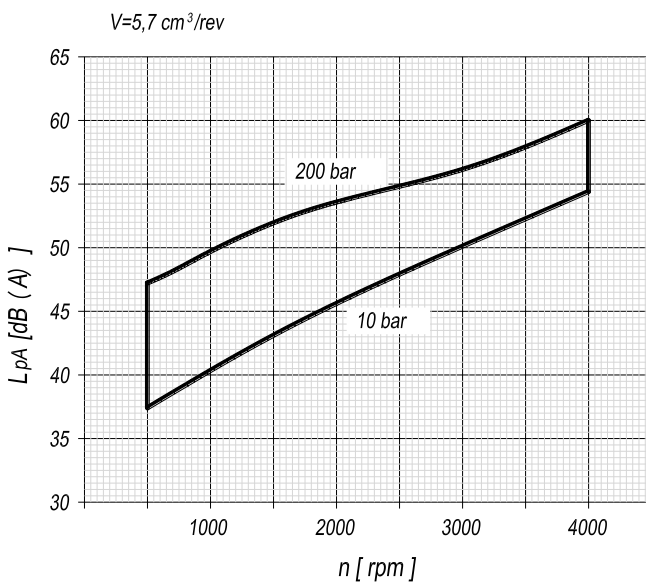
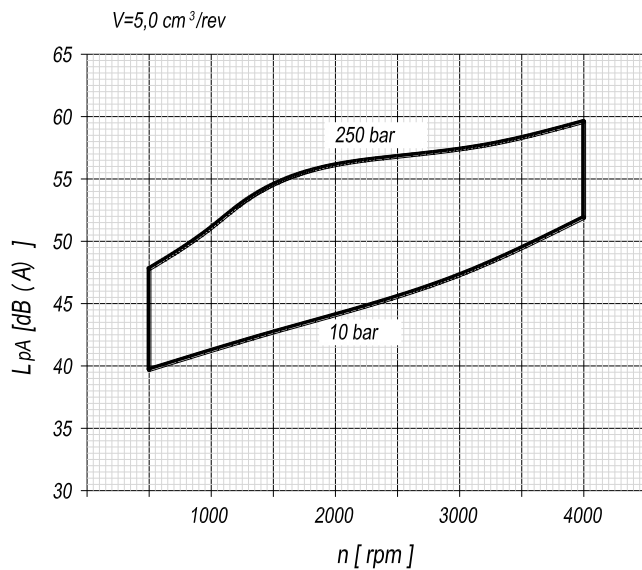
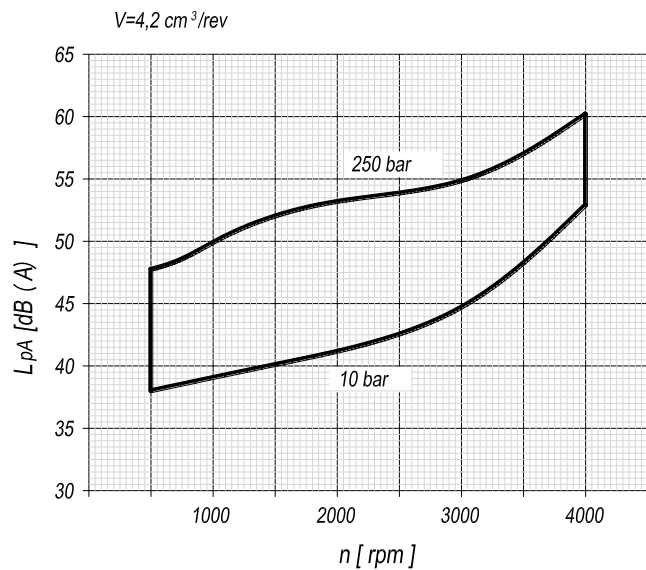
Technical parameters of the new hydraulic gear pump offered

Type	Displacement cm^3/rev	Flow		Pressure	max Speed	Dimension		
		1500 min^{-1} l / min	max min^{-1} l / min	p_{nom} bar	n_{max} rpm	B mm	Inlet	Outlet
H10A(C)1,6X302	1,6	2,28	5,32	250	3500	73,6	G 3/8" - A	Ø 9,2
H10A(C)2,0X302	2,0	2,85	6,65	250	3500	75,2		
H10A(C)2,5X302	2,5	3,56	8,31	250	3500	77,2		
H10A(C)2,65X302	2,65	3,78	8,81	250	3500	77,8		
H10A(C)3,15X302	3,15	4,49	10,47	250	3500	79,8		
H10A(C)3,65X302	3,65	5,20	12,14	250	3500	81,9		
H10A(C)4,2X302	4,2	5,99	13,97	250	3500	84,1		
H10A(C)4,7X302	4,7	6,70	15,63	250	3500	87,1		
H10A(C)5,0X302	5,0	7,13	14,25	250 *	3000	87,2		
H10A(C)5,7X302	5,7	8,12	16,25	200	3000	90,1		
H10A(C)6,1X302	6,1	8,69	14,49	200	2500	91,8		
H10A(C)7,4X302	7,4	10,55	17,58	180	2500	97,2		
H10A(C)8,0X302	8,0	11,40	15,20	150	2000	99,7		
H10A(C)8,5X302	8,5	12,11	16,15	150	2000	101,7		

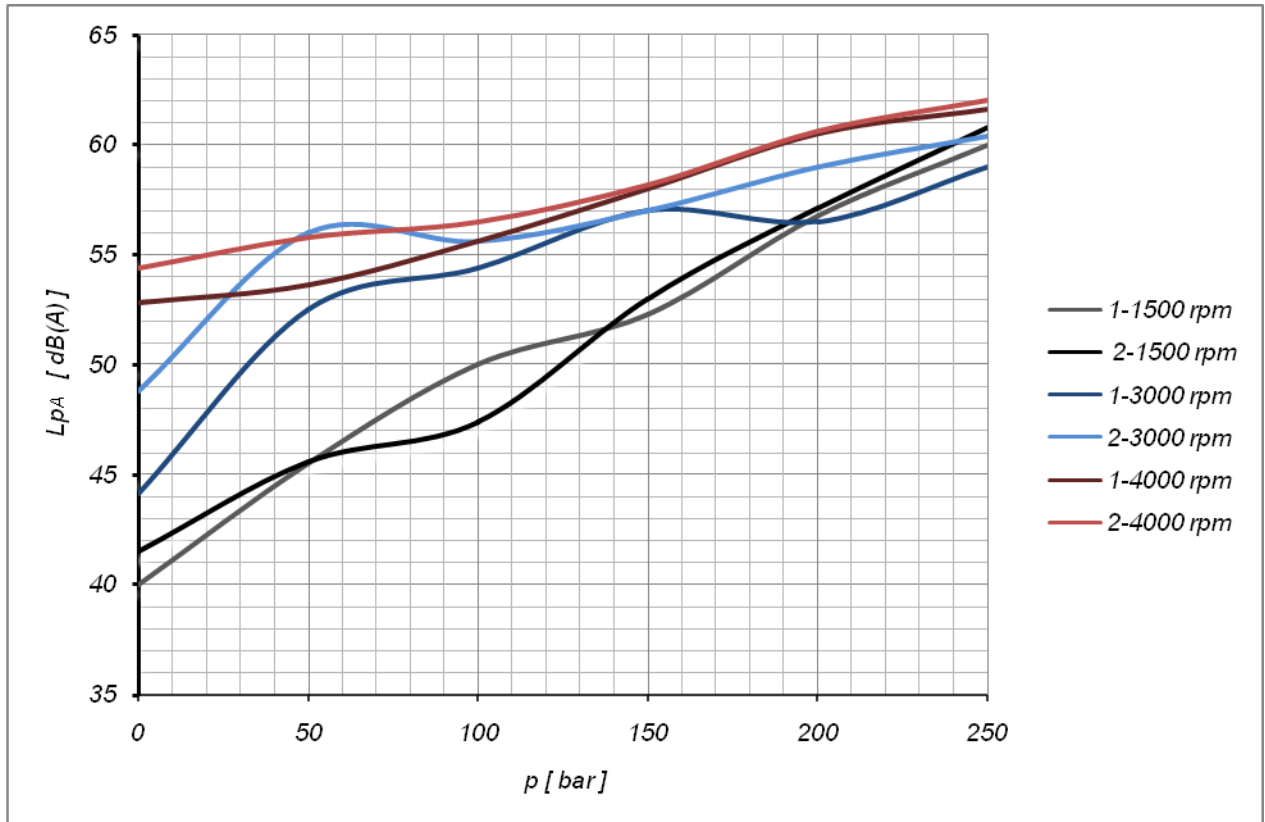
Change in the noise level depending on the rotation speed /rpm/ in the working pressure range.

Oil data: viscosity $46 \text{ mm}^2/\text{s}$ at $t 40^\circ \text{C}$
 Distance between measuring sensor and pump – 1 m.
 Inlet pressure 0,9...1 bar absolute





4
 Change in the noise level of gear pump H 10A4,2X302C4 depending on the pressure at the respective rotation speed /rpm/.



Comparison noise level of a helical gear pump and a conventional straight teeth gear pump

