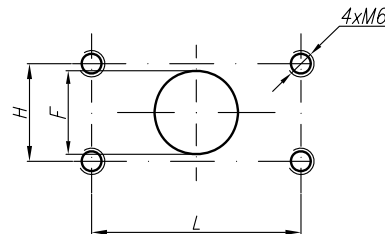


At pump displacement above 10ccm the Inlet port is rotated:



Type	Displacement cm ³ /rev	Flow		Pressure P _{nom} bar	max Speed n rpm	Dimension								
		at 1500 rpm l/min	at max rpm l/min			A mm	B mm	Inlet			Outlet			
								H	L	F	H	L	F	
20A(C)4,5X604	4,5	6,14	14,33	250	3500	40,5	78	38,1	17,4	15	38,1	17,4	15	
20A(C)6,3X604	6,3	8,69	20,29	250	3500	42	81							
20A(C)8,2X604	8,2	11,32	26,40	250	3500	43,5	83,9							
20A(C)10X604	10	13,95	32,55	250	3500	45	87							
20A(C)11X604	11,3	15,76	36,78	250	3500	46	89,1	22,2	47,6	19	38,1	17,4	15	
20A(C)12X604	12	16,92	39,48	250	3500	46,5	90,3							
20A(C)14X604	14	19,95	46,55	250	3500	48	93,4							
20A(C)15X604	15	21,60	36,00	250	2500	49	95							
20A(C)16X604	16	23,04	38,40	250	2500	50	96,6	25						
20A(C)19X604	19	27,36	45,60	200	2500	52	101,5							
20A(C)22X604	22	31,68	42,24	180	2000	55	106,5							
20A(C)25X604	25	36,00	48,00	160	2000	57,2	111,4							