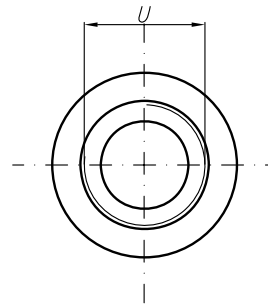
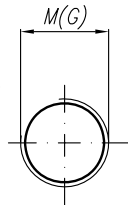


(4xØ9 on request  
Designation: 20A(C)...X687F...)

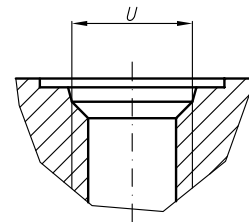
V  
Variants for ports – M;G;U

Designations:

- ...X687 – Normal version (flanges);
- ...X687M – Metric threads;
- ...X687G – GAS threads;
- ...X687U – SAE UNF threads;



SAE J475 (ISO R725)



Type	Displacement	Flow		Pressure	max Speed	Dimension														
		at 1500 rpm	at max rpm			P <sub>nom</sub>	n	A	B	Inlet				Outlet						
	cm <sup>3</sup> /rev	l/min	l/min	bar	rpm	mm	mm	E	F	d	M	G	U	E	F	d	M	G	U	
20A(C)4,5X687...	4,5	6,14	14,33	250	3500	42,5	80													
20A(C)6,3X687...	6,3	8,69	20,29	250	3500	44	83													
20A(C)8,2X687...	8,2	11,32	26,40	250	3500	45,5	85,9													
20A(C)10X687...	10	13,95	32,55	250	3500															
20A(C)11X687...	11,3	15,76	36,78	250	3500															
20A(C)12X687...	12	16,92	39,48	250	3500															
20A(C)14X687...	14	19,95	46,55	250	3500															
20A(C)15X687...	15	21,60	36,00	250	2500															
20A(C)16X687...	16	23,04	38,40	250	2500															
20A(C)19X687...	19	27,36	45,60	200	2500															
20A(C)22X687...	22	31,68	42,24	180	2000															
20A(C)25X687...	25	36,00	48,00	160	2000															
<b>Equivalent to 20A(C)...X006 and 20A(C)...X016</b>								39,7	19	M8-6H	M20x1,5	G3/4	1 1/16"-12UNF	39,7	19	M8	M20x1,5	G1/2	7/8"-14UNF	