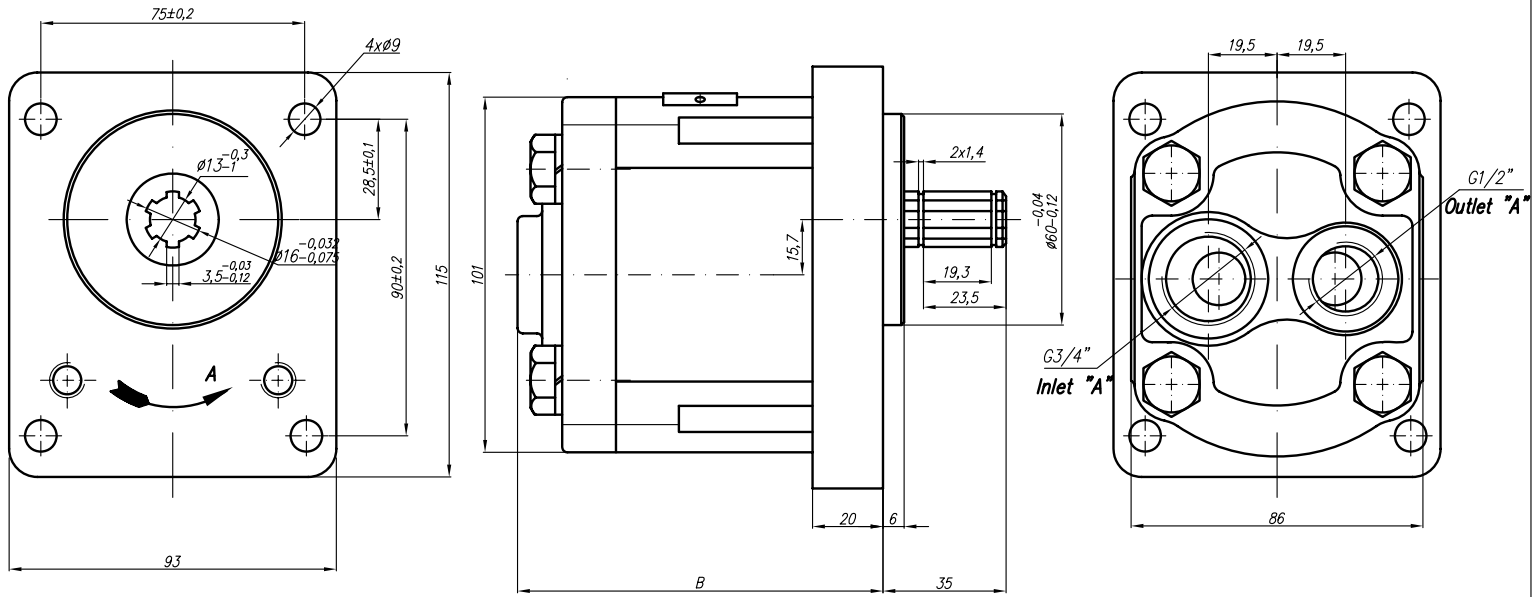
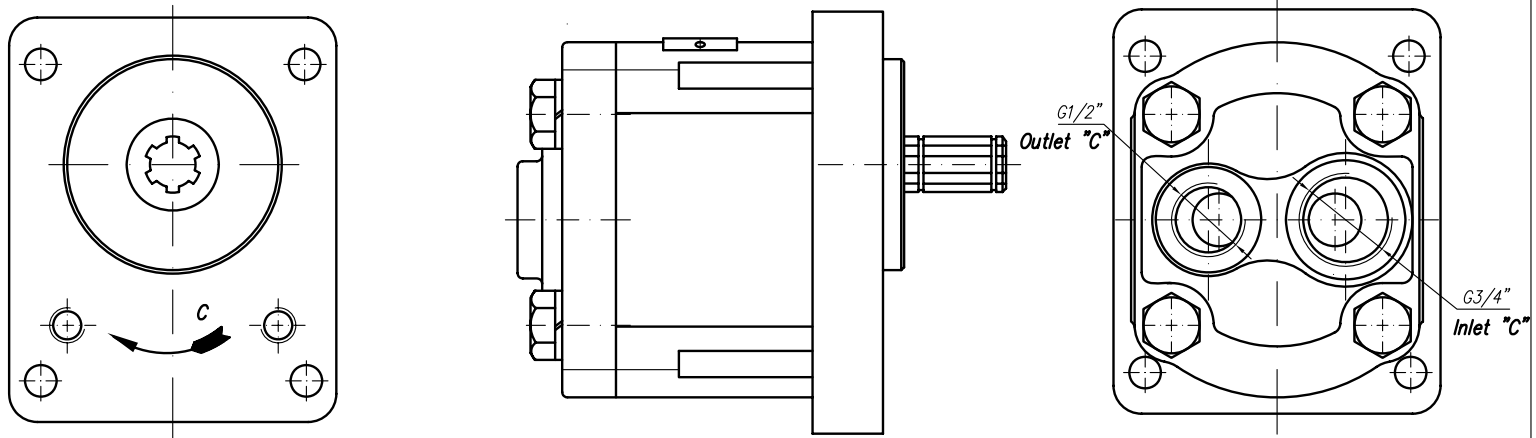


Rotation "A"



Rotation "C"



Type	Displacement cm ³ /rev	Flow		Pressure P _{nom} bar	max Speed n rpm	Dimension							
		at 1500 rpm l/min	at max rpm l/min			A mm	B mm	Inlet G		Outlet G			
20A(C)6,3X126W	6,3	8,69	20,29	250	3500		98						
20A(C)8,2X126W	8,2	11,32	26,40	250	3500		100,9						
20A(C)10X126W	10	13,95	32,55	250	3500		103,9						
20A(C)11X126W	11,3	15,76	36,78	250	3500		106						
20A(C)14X126W	14	19,95	46,55	250	3500		110,4						
20A(C)16X126W	16	23,04	38,40	250	2500		113,5						
20A(C)19X126W	19	27,36	45,60	200	2500		118,5						
20A(C)22X126W	22	31,68	42,24	180	2000		123,5						